

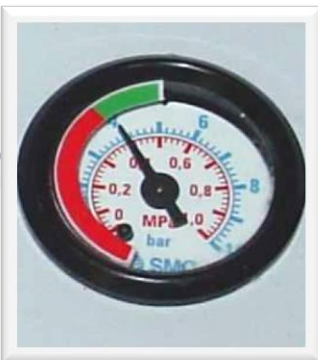
# Door Trainer A330/340



Outside View



Inside View



Pressure Indicator  
For Slide



Warning Lights



Flight Attendant Panel



Instructor Panel

Measurement/Weights	
Length	3 600 mm
Width	2 520 mm
Height	2 600 mm
Weight	1 500 kg
Electrical system	
Operating voltage	220 to 240 VAC
Frequency	50 to 60 Hz
Power rating	1,0 kVA
Current consumption	Max. 4,5 A
Fuse protection	16 A
Protection (control cabinet)	IP 56
Pneumatic system (compressed air supply)	
Pressure	Min. 6 bar/max. 11,5 bar
Ambient conditions	
Temperature transport/storage	-10°C to 45°C
Temperature operation	15°C to 35°C
Humidity	< 90%
Noise emission	< 70 dB (A)

RST ROSTOCK SYSTEM-TECHNIK

Partner of the Aerospace Industry

**RST**

MEMBER OF THE  
FERCHAU AVIATION GROUP

# Door Trainer A330/340

Door Trainer Functions and Malfunctions		
Page	Denomination	Function
<b>Functions</b>	CABIN LIGHTS	Switching on/off cabin light
	EXIT SIGNS	Switching on/off exit signs
	EVAC SET	Setting/resetting cabin evacuation command
	CABIN PRESSURE	Setting/resetting cabin pressure warning light
	HANDLE BLOCK	Blocking/unblocking door handle → Handle cannot be moved
	DOOR BLOCK	Blocking/unblocking door → Door can be lifted by moving door handle upwards, but not to be opened
	PNEU ASSIST FAILURE	No assistance by pneumatic door cylinder when opening the door → No automatic emergency opening of the door in ARMED mode → Low pressure indication on pressure gauge for emergency opening cylinder (no influence in DISARMED mode because door has to be opened manually) Will be automatically set when any level of "Door Jamming" page is selected
	AUTOMATIC INFLATION FAILURE	When in ARMED mode there is no automatic inflation of the slide → No inflation sound → inflation has to be started manually by pulling the handle on the ground (no influence in DISARMED mode)
	MANUAL INFLATION FAILURE	When in ARMED mode there is no inflation of the slide even by pulling the handle on the ground → Low pressure
	OUTSIDE OPENING	When in ARMED mode door can be opened from outside
<b>Door Jamming</b>	LEVEL 1	Door jam = low "Pneu Assist Failure" is set
	LEVEL 2	Door jam = medium "Pneu Assist Failure" is set
	LEVEL 3	Door jam = high "Pneu Assist Failure" is set
<b>Status</b>	DIFFERENT VARIABLES OF CONTROL SYSTEM	Displaying different states of the PLC-program

Contact: **Renate Plath**  
RST Rostock System-Technik GmbH  
Friedrich-Barnewitz-Straße 9  
18119 Rostock, Germany

T +49 (0)381 56 556  
F +49 (0)381 56 202  
W [www.rst-rostock.de](http://www.rst-rostock.de)  
E [r.plath@rst-rostock.de](mailto:r.plath@rst-rostock.de)